

WORLD-CLASS COLLO CASE STUDIES

July-August 2019

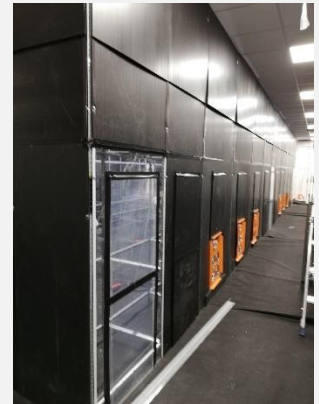
1. World-class collo (Paris - France)



- **Equipment on site for a total power of 3,4 MW**
 - 162x 21 kW upgraded load banks for IT rooms
 - 2 x 500 kW + 1 x 600 kW industrial load banks for genset and UPS tests

- **Main achievements**
 - 160 ml of **temporary confinement**
 - Low temperature in the room with an average delta T on the loadbank fleet of **35 K**

- **USP**
 - High reliability of the load banks during the 3 weeks of test
 - Dual power supply allowing testing the swith from lane A to B



Info	Value
Nominal Power	21k W
Max voltage	3 x 230 V Mono – 50 Hz 400V Triphase – 50 Hz
Resolution	1 kW
Steps	9 steps : (1 / 2 / 4 kW) x 3
Power Supplies	2 redundant inputs (3 x mono 32A Hypra P17)
Average Delta T°	35 K at full power
Air Flow	4 x 375 m3/h
Ventilation	Forced horizontal
Security	4 circuit breakers on front panel Temperature indicator light

Technical Description

- Metal frame without any screws (no on-site cutting)
- Closed frame with a combination of black & transparent panels
- Moduls that can adapt to any rooms

